

ABOUT ICSEB

The only legally authorized *Filum System*[®] centre.

- Integrated Spine and Nervous System Care Unit.
- Multidisciplinary research, development and innovation centre.
- Patient care, international mediation and translation in 14 languages.

OTHERS DISEASES WE TREAT:

Cervical herniated disc
Thoracic herniated disc
Lumbar herniated disc
Spinal stenosis
Vertebral luxation
Facet joint syndrome
Peripheral nerve disorders
Platybasia
Basilar impression
Retroflexed odontoid
Kinking of the brain stem
...and others

Quality management centre certified by:



Medical practice authorized by:



Professional society authorized by:



Centre accredited by:



FILUM ACADEMY BARCELONA[®]

Email:
info@filumacademybcn.com



INSTITUT CHIARI
& SIRINGOMIELIA
& ESCOLIOSIS
DE BARCELONA

Paseo Manuel Girona 16
08034 Barcelona, Spain

+34 932 066 406
+34 932 800 836
+34 902 350 320

icb@institutchiaribcn.com



Scan to visit our website

Opening hours

Monday-Thursday 9:00-18:00 (UTC+1)
Friday 9:00-15:00 (UTC+1)

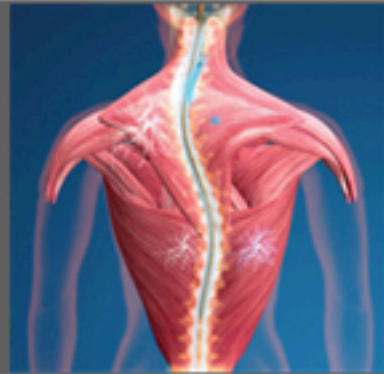


INSTITUT CHIARI &
SIRINGOMIELIA &
ESCOLIOSIS DE
BARCELONA

HIGHLY SPECIALIZED MEDICAL
CENTRE

www.institutchiaribcn.com

Idiopathic Scoliosis



Arnold Chiari Syndrome I



Idiopathic Syringomyelia



The Filum Disease arises due to an anomalous traction exerted by the filum terminale ligament. Its symptoms and signs involve the entire nervous system, the cranium and the vertebral column. The three disorders are expressions of this disease and can share the same symptoms.

LOWER BACK PAIN, UPPER BACK PAIN, NECK PAIN, HEADACHES, GAIT ALTERATIONS, INABILITY TO MOVE BECAUSE OF BACK PAIN AND PARESTHESIAS.

Scoliosis consists in an anomalous lateral misalignment of the vertebral column, which is the result of a mechanism to compensate the spinal cord traction produced by a tight filum terminale.

HEADACHES, VERTIGO, NAUSEA, VOMITING, NECK PAIN, DYSPHAGIA, INSOMNIA, CONCENTRATION AND MEMORY ALTERATIONS.

The **Arnold Chiari Syndrome I** consists in a descent of the lower part of the cerebellum, the cerebellar tonsils, into the spinal canal through the foramen magnum, without any other medullary-vertebral malformations.

THERMAL AND TACTILE SENSITIVITY ALTERATIONS, PARESTHESIAS, GAIT ALTERATION, INSTABILITY AND LIMB PAIN.

Syringomyelia consists in a liquid cyst inside the spinal cord, which is a result of the death of spinal cord tissue occurring as a consequence of the lack of bloodflow due to the traction exerted by a tight filum terminale.

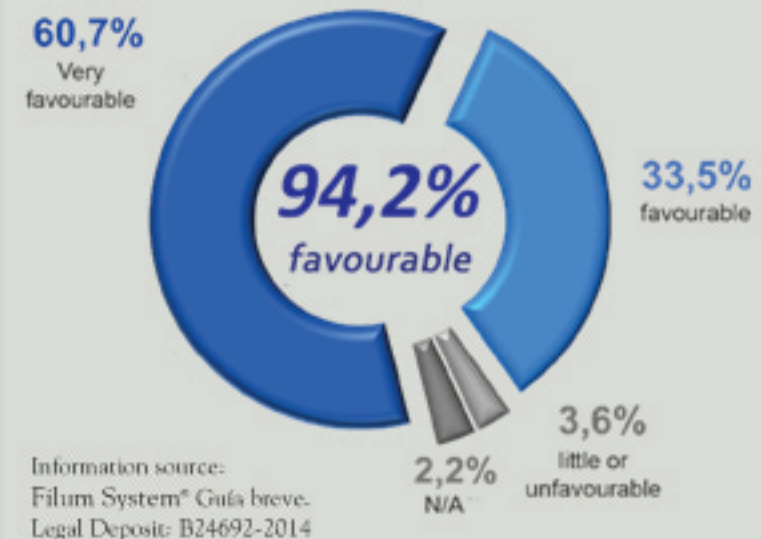
Filum System® Health system

- Worldwide pioneer diagnostic method.
- Innovative neurosurgical treatments through minimally invasive techniques.
- Personalized information and medical follow-up.
- Neurorehabilitation guidelines.
- Therapeutic orientation at distance.

The **Filum System®** is a health method that has been successfully applied to more than 1000 patients.

- 40 years of research.
- Etiopathogenic studies and evidence.
- Over 20 years of treatment application.
- The Filum System® is being taught and accredited by the Filum Academy Barcelona®.

Patient satisfaction



Outcomes

Excellent clinical and surgical outcomes.
No relevant complications.
High rate of patient satisfaction.

Eliminates the cause of the diseases.
Stops the progression of the diseases.
Improves the quality of life.