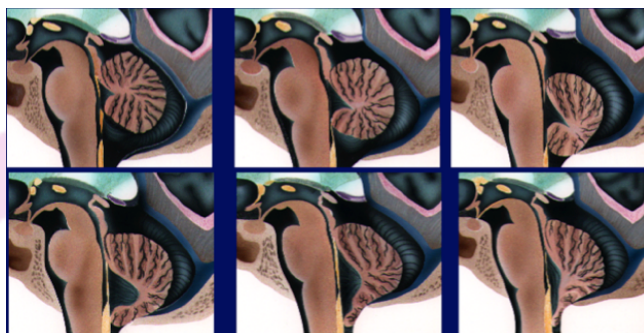


Chiari Malformation?



Formation sequence of Arnold-Chiari

10 THINGS THAT MANY DOCTORS ARE NOT AWARE OF ABOUT “CHIARI”

1. According to the WHO classification of diseases, its name is *Arnold-Chiari Syndrome*.
2. Its most frequent form is *Arnold-Chiari Syndrome type I* (ACHS.I), which is part of a new condition called *Filum Disease*.
3. The ACHS.I is far more frequent than one may think, more than *1 in 700*.
4. The ACHS.I is not related to the action of the cerebrospinal fluid, but to the traction that the *Filum Terminale* ligament exerts on the whole central nervous system.
5. The conventional treatment for the ACHS.I, the *suboccipital craniectomy*, is contraindicated, as it causes more deaths than the spontaneous evolution of the disease.
6. *Idiopathic Syringomyelia* (I.SM), which can be associated with ACHS.I in the Filum Disease, is an injury of the spinal cord tissue due to lack of blood flow.
7. The *intramedullary cavitation shunting* in Idiopathic Syringomyelia causes more complications (42%), than the spontaneous evolution of the disease.
8. ACHS.I can be associated to I.SM that, in turn, in 75% of cases is accompanied by Idiopathic Scoliosis (I.SCO). All 3 share the same cause together with other conditions, such as Basilar Invagination, Platybasia, Odontoid Retroflexion, Brainstem Kinking and others.
9. The progression of the 3 conditions, ACHS.I, I.SM, I.SCO, and of the other clinical forms of Filum Disease, can be halted by applying the *surgical sectioning of the Filum Terminale*.
10. There is a health method, called *Filum System*[®] and patented to guarantee an excellent medical praxis, that through its 12 protocols allows the diagnosis, treatment and control of the majority of manifestations of the Filum Disease, including the Arnold-Chiari Syndrome type I.

Bibliographical references: **M.B. Royo Salvador**, Platibasia, impresión basilar, retroceso odontoideo y kinking del tronco cerebral, etiología común con lairingomielia, escoliosis y malformación de Arnold-Chiari idiopáticas, 1996, <https://institutchiaribcn.com/platibasia-impresion-basilar-retroceso-odontoideo-y-kinking-del-tronco-cerebral-etilogia-comun-con-la-siringomielia-escoliosis-y-malformacion-de-arnold-chiari-idiopaticas/>

M.B. Royo Salvador, Siringomielia, escoliosis y malformación de Arnold-Chiari idiopática. Etiología en común, 1996, <https://institutchiaribcn.com/siringomielia-escoliosis-y-malformacion-de-arnold-chiari-idiopatica-etilogia-comun/>

M.B. Royo Salvador, Doctoral Thesis, 1992 <https://institutchiaribcn.com/tesis-doctoral-aportacion-a-la-etilogia-de-la-siringomielia/>